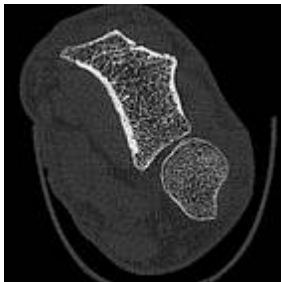


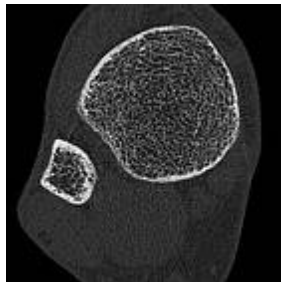
SCANCO MEDICAL

XtremeCT

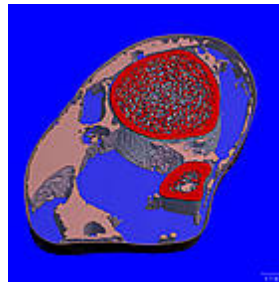
Clinical Measurements (XtremeCT)



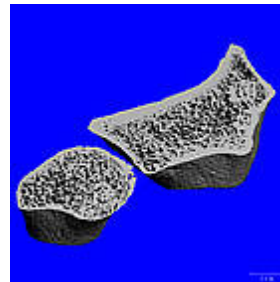
Arm cross-section



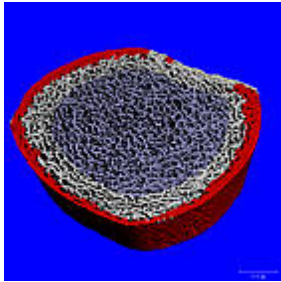
Leg cross-section



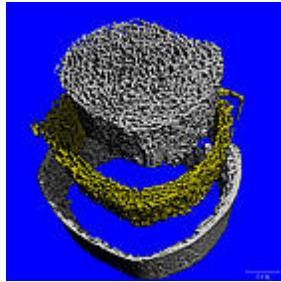
Leg; segmented



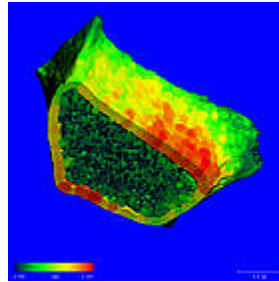
Radius and ulna;
segmented



Tibia segmentation



Tibia segmentation
(exploded view)



Thickness map of
bone in radius

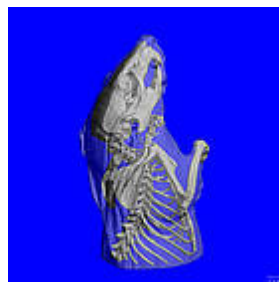
Preclinical measurements (XtremeCT)



Human hand

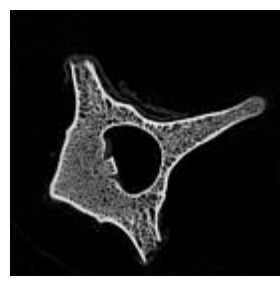
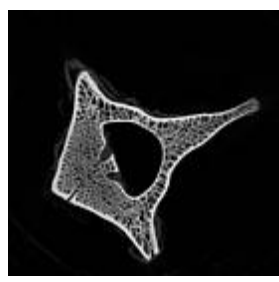
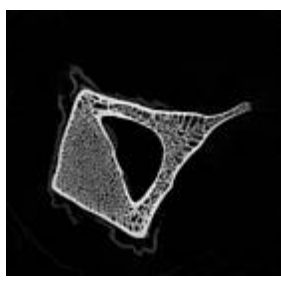
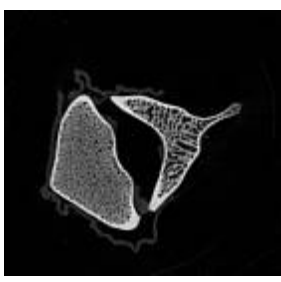


Human femur



Rat

Preclinical measurements Sheep Vertebrae (XtremeCT: nominal resolution of 41 μm)



SCANCO Medical AG	phone	+41 (0)44 805 98 00
Fabrikweg 2	fax	+41 (0)44 805 98 01
8306 Brüttisellen	web	www.scanco.ch
Switzerland	email	info@scanco.ch